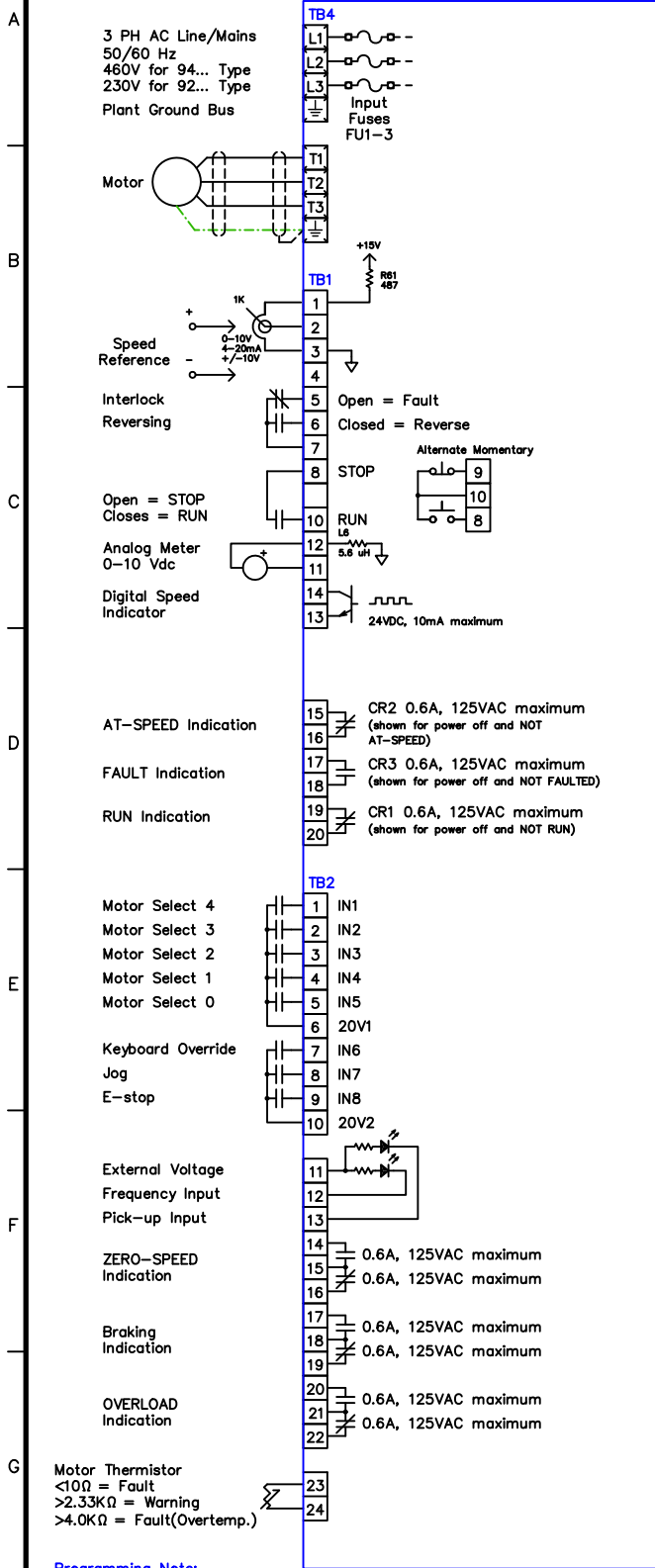
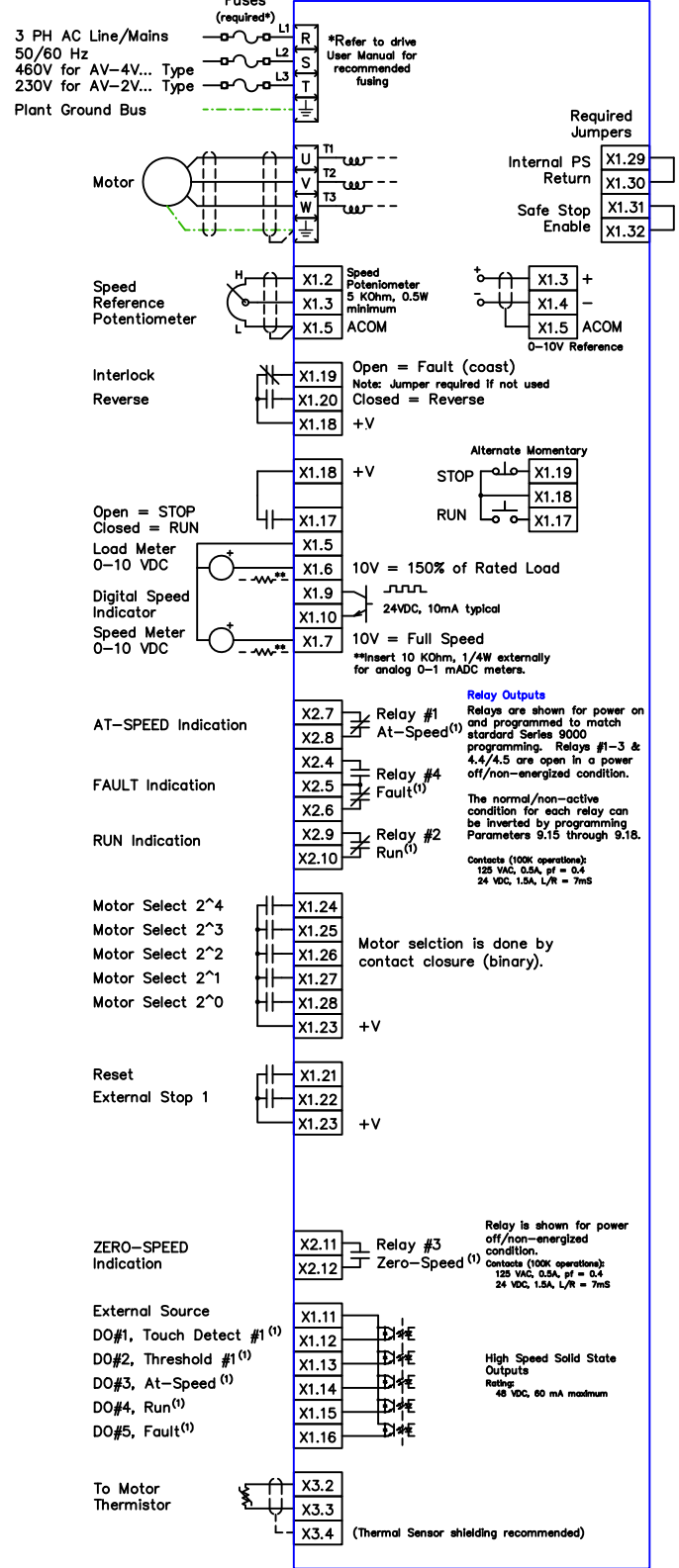


Volkman Series 9000
Typical Connection Diagram



SPINDEL AV Series
Cross Reference Connection Diagram



Programming Note:

SPINDEL AV Series Drives are highly programmable. The terminal functions shown in this cross reference are set to match standard/default Series 9000 programming. It is assumed all AV Series drive parameters have been set to their default value (via the "Control Panel" Menu) and then the following parameters are programmed as indicated:

- P5.01, Touch Detect #1 = Absolute
- P5.02, Touch Detect #1 Threshold = 100%
- P8.02, Digital Input X1.19 (DI2) Select = Stop/Interlock
- P8.03, Digital Input X1.20 (DI3) Select = Reversing
- P8.05, Digital Input X1.22 (DI5) Select = External Stop 1
- P9.15, Relay X2.7-.8 (#1) Invert = Yes
- P9.16, Relay X2.9-.10 (#2) Select = Yes
- P9.18, Relay X2.4-.5 (#4) Select = No

In addition to the above, the motor parameters (Groups 1 and 2) must also be programmed.

Unless otherwise specified, drawing is not to scale.

Date: 15 Feb 16
Drawn By: KLG
Date: 15 Feb 19
Checked By: OMM

SPINDEL ELECTRONICS

SPINDEL Electronics
4517 Broadmoor Avenue SE
Grand Rapids, MI 49512
TEL: +1 616 554 2200
FAX: +1 616 554 2033

Title: Volkman Series 9000 – SPINDEL AV Series Connection Cross Reference

Date: 15 Feb 16
Drawn By: KLG
Date: 15 Feb 19
Checked By: OMM

Sheet: 1 of 1

Drawing No.: 81150-0